



LEABANK PRIMARY SCHOOL NEWSLETTER

FRIDAY 9TH MAY 2025

Greetings, Tena koutou, Kia orana, Talofa Lava, Fakalofa Lahi Atu, Malo e Lelei, Namaste, Hola, Ni hao, Xin chao.

Dear Parents/Caregiver

WELCOME BACK TO TERM 2

We hope everyone had a restful and enjoyable break. A special warm welcome to all the new students and families who have joined our school community, we are so happy to have you with us.

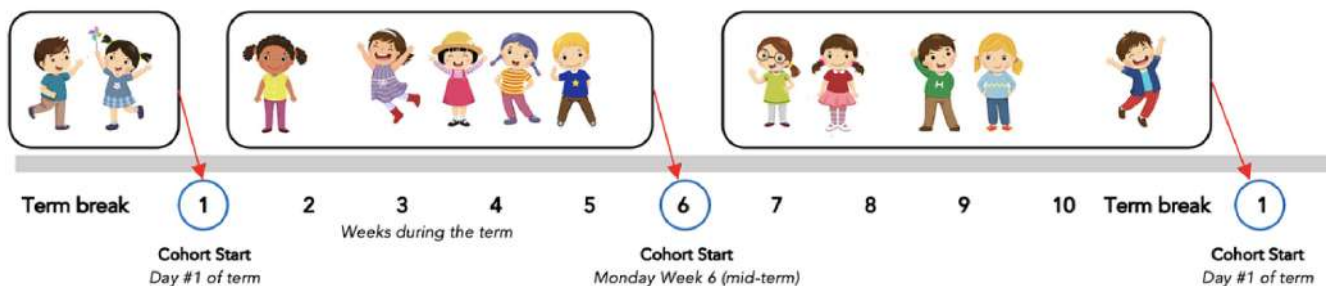
We look forward to an exciting and productive term ahead, filled with learning, growth and great memories. Let's make it a fantastic Term 2 together! Check out our upcoming events for this term.



DATE	EVENT
Monday 12 May	Staff Only Day - SCHOOL CLOSED
Monday 12 - Friday 16 May	Rotuman Language Week
Tuesday 13 May	MPSSA Boys Rugby Tournament
Friday 16 May	Pink Shirt Day & Principal Awards Assembly
Wednesday 21 May	Soccer Tournament
Friday 30 May	Caught Being Good Assembly
Monday 2 June	Kings Birthday - SCHOOL CLOSED
Monday 2 - Friday 6 June	Samoan Language Week
Thursday 12 June	MPSSA Girls Rugby Tournament
Friday 20 June	Matariki - SCHOOL CLOSED
Friday 27 June	End of Term 2

COHORT ENTRANCE

We sent out a survey to consult our community on cohort entry for new entrants. This means that new entrant students will start school either on the first day of the term or the first day of week 6 of the term. This means students start school with a group of new students, rather than on their own. Students still attend pre-school visits before their start date. This also gives the school the ability to plan staffing and class placements thoroughly.



Cohort Entry does not apply to students who are 6 years or older, or have been at another school for more than a term.

From those who responded, we had overwhelming support for Cohort Entry, with a small number who were neutral, and a few who expressed concern.

Some of the sentiments and quotes from parents were:

- ➡ Reduces anxiety and fear of starting alone; Promotes a smoother transition into school life.
 - * "Love the idea of new entrants starting along with other fellow classmates... makes it a more comfortable start."
 - * "Five-year-olds are still so little and sensitive... starting with others helped my children develop relationships faster."
- ➡ Allows for structured preparation and smoother classroom integration and Reduces disruptions caused by staggered new entrant arrivals.
 - * "Allows teachers to plan ahead."
 - * "Benefits teachers too – they can prepare for a set amount of students."
- ➡ Provides peace of mind knowing their child won't start alone
 - * "Puts me at ease as a parent knowing my child isn't starting school alone."
 - * "My daughter loved it... she wasn't overwhelmed and had a great start."

For some who were neutral or concerned. Below are responses to questions they posed.

What happens to children who turn 5 after week six of a term? Do they need to wait until the next term, which might not be for another month or more?

If a child turns 5 or enrolls after week 6, they will start at the beginning of the following term as a group. After week 6, they can still participate in transition visits to prepare them for starting the following term. This also means they will experience a full term, rather than 1-4 weeks before the end of term.

What is a cohort ?

A cohort is a group, in this case, a group of students who are due to enter school for the first time.

Will this impact the spaces available for students. And the term of classes missed if they start later...

This will not impact spaces available for students. This will help school manage class sizes as we will be able to plan to employ a new teacher and open a new class if needed. In terms of the impact that a later start has on learning, the cohort entry approach aims to balance those risks by providing a cohesive, structured start for new students. Children will only start a maximum of 4 weeks 4 days after their 5th birthday.

I feel starting when they turn 5 is better than delaying... is cohort entry to benefit the Kaiako or tamariki?

The delay for 5 years olds will be a maximum of weeks and 4 days. The vast majority of students will not be delayed this long. There is minimal benefit for the teacher as they are qualified and capable of managing students on staggered entry. The most benefit is to the new enrolment students who enter a program of social and academic learning and assessment with a group of learners at the same time.

We will be implementing our cohort entry policy in week 3, Term 3. Up until this time, we will implement an informal cohort entry where we will encourage new enrolments to start as a cohort. If you have any questions, please ring or visit the office.

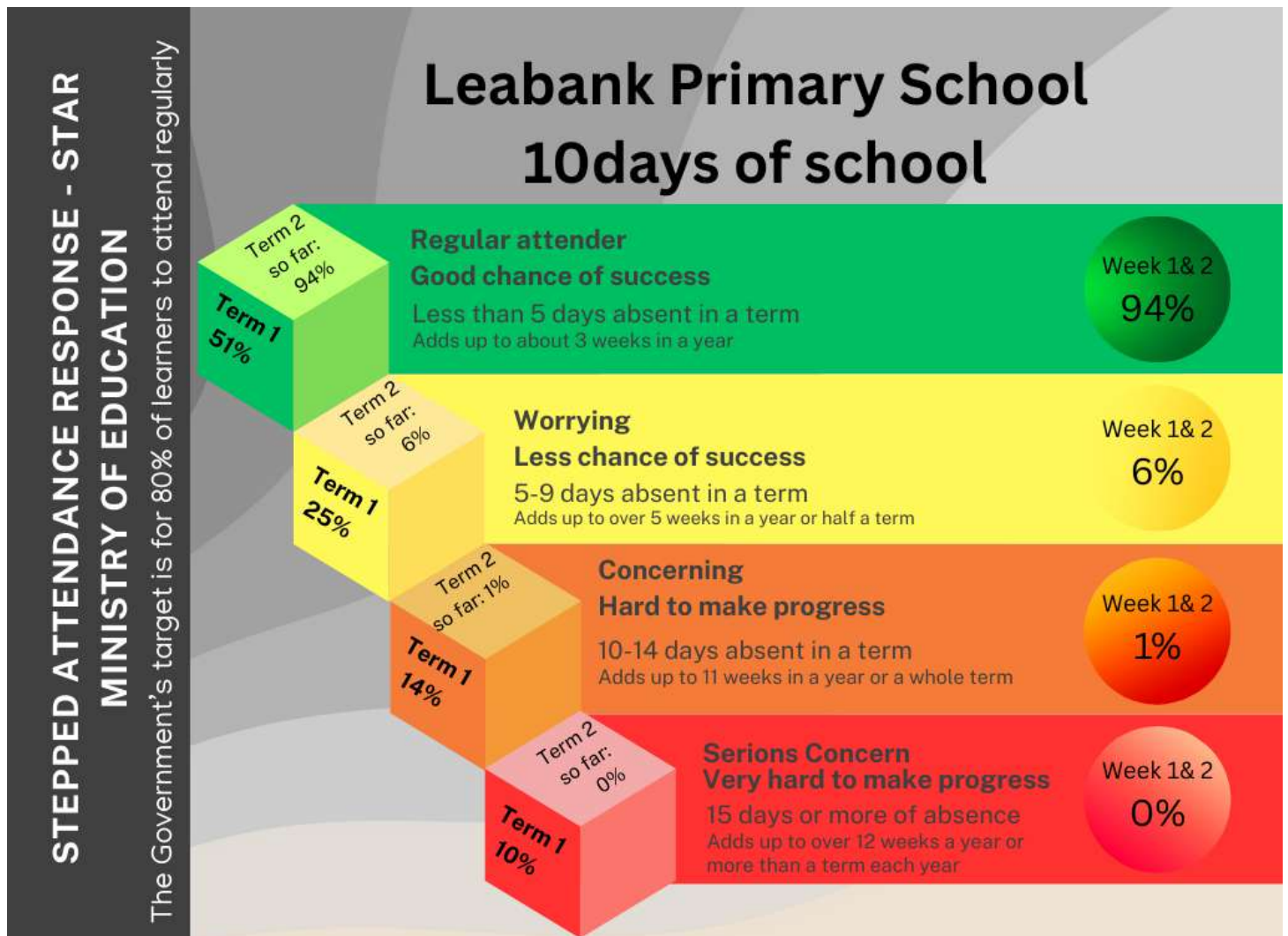
STAFF ONLY DAY

Please be advised that next Monday 12th May is a Staff Only Day. School will be closed to all students on this day to allow for staff professional development. School will resume back to normal on Tuesday 13th May.

YEARS 4, 5 AND 6 FO GUANG BUDDHIST TEMPLE TRIP

The Year 4, 5 and 6 students are going on a trip to the Fo Guang Buddhist Temple. This trip will be next week on Tuesday 13th May. The children will be travelling to and from the Buddhist temple by bus.

The bus will be leaving at 9:00am sharp and will return to school before 11:50am. Please make sure your child arrives at school early on this day in full school uniform and covered shoes. There is no cost for this trip. Parents who volunteer will NOT be able to bring any other person/children with them on the day because you will be supervising a group of children.



Naku iti noa, na

Caroline McLeod
Tumuaki